

COMPARISON OF SAFER AND METRIC-BASED ACTUAL EVAPOTRANSPIRATION MODELS IN A SUBTROPICAL AREA OF BRAZIL

César de Oliveira Ferreira Silva¹, Rodrigo Lilla Manziane², José Luiz Albuquerque Filho³

ABSTRACT: Remote sensing algorithms are well known to estimate surface energy fluxes in regional to global scales with low cost. Accurate measurements of actual evapotranspiration (ET) in regional scales for crops are demanded for a better calculation of water management scenarios. The remote sensing approach has an advantage of estimating ET from larger spatiotemporal scales when compared with traditional methods. This study compared the result of ET estimates from the “Simple Algorithm for Evapotranspiration Retrieving” (SAFER) and “Mapping Evapotranspiration at high Resolution with Internal Calibration” (METRIC) models on varied land uses of a subtropical area located in Southeast Brazil by using LANDSAT-8 satellite data. Meteorological data collected from an agrometeorological station was used for giving input to both models. The results showed similarity of ET estimate from both models, although slight deviation especially at high ET values. It happened due differences as the need of anchor pixel in METRIC, which requires two points with extrem thermohydrological conditions in the same area. Minimum ground data requirement is the major advantage of the METRIC over the SAFER model. SAFER requires high quality weather data from the ground station located inside the study area, and for this reason can take into account the daily variability of climatic parameter. The maximum value, the sum and ET range by METRIC was higher than SAFER. Nevertheless, the study has considered both models feasible for estimation of ET from satellite data in the study area.

KEYWORDS: remote sensing, modelling, superficial temperature, Landsat-8, agriwater

COMPARAÇÃO DE MODELOS DE EVAPOTRANSPIRAÇÃO REAL SAFER E METRIC EM UMA ÁREA SUBTROPICAL DO BRASIL

¹ Agronomical Sciences Faculty, Universidade Estadual Paulista, São Paulo 18610-034, Brazil

² School of Sciences and Engineering, Universidade Estadual Paulista, São Paulo 17602-496, Brazil

³ Department of Hydrogeology, Institute of Technological Research (IPT), São Paulo 05508-901, Brazil

RESUMO: Algoritmos de sensoriamento remoto são conhecidos por estimar fluxos de energia de superfície em escalas regionais a globais com baixo custo. Melhores cenários de gerenciamento de recursos hídricos da água exigem medições precisas da evapotranspiração real (ET) em escalas regionais. A abordagem de sensoriamento remoto tem a vantagem de estimar a ET em escalas espaço-temporais maiores que os métodos tradicionais. Este estudo compara o resultado de estimativas de ET do “Simple Algorithm for Evapotranspiration Retrieving” (SAFER) e “Mapping Evapotranspiration at high Resolution with Internal Calibration” (METRIC) em variados usos da terra de uma área subtropical localizada no Sudeste do Brasil usando dados do satélite LANDSAT-8. Dados meteorológicos coletados de uma estação agrometeorológica foram utilizados para ambos os modelos. Os resultados mostraram similaridade da estimativa da ET em ambos os modelos, embora houvesse desvio, especialmente em altos valores de ET. Isto é devido a diferenças como a necessidade de âncora de pixel no modelo METRIC, que necessita de dois pontos com condições termohidrológicas extremas em uma mesma área. A exigência mínima de dados terrestres é a principal vantagem do METRIC sobre o modelo SAFER. Embora o SAFER exija dados climáticos de alta qualidade da estação terrestre localizada dentro da área de estudo, leva em conta a variabilidade diária do parâmetro climático diretamente, sem a necessidade de extrapolação numérica. No entanto, o estudo considerou ambos os modelos viáveis para a estimativa de ET a partir de dados de satélite na área de estudo. Neste estudo, o valor máximo, a soma e a variação do ET pelo METRIC foram maiores que o do SAFER.

PALAVRAS-CHAVE: sensoriamento remoto, modelagem, temperatura de superfície, Landsat-8, agriwater

INTRODUCTION

During the last decades, there has been increasing need for the accurate estimation of plant water requirement in agricultural sector where large volume of water is consumed. Usually the amount of water consumed by plant is considered as water evaporated from the soil and transpired by plant. Traditionally evapotranspiration (ET) is estimated from point-based ET models such as Penman-Monteith, Priestly-Taylor, Hargreaves, Blaney-Criddle and crop coefficient approach (HARGREAVES, ALLEN, 2003). However, estimation of spatial distribution of ET over the large area is restricted due to wide-spread distribution of weather

stations. On the other hand, crops have different crop coefficient in different stage, therefore, estimation of crop coefficient and crop stages because of large crops population in the nature is difficult (ALLEN et al., 2005a, TEIXEIRA et al., 2014, SILVA, MANZIONE, TEIXEIRA et al., 2019).

Satellite-based estimation of evapotranspiration (ET) have been reported to be essential for spatially evaluation of plant water requirement and water use regulation, particularly in the area with abundant water resources. Therefore, several satellite-based ET models have been developed and evaluated in different climatic conditions during the last couple of years. This study compares two remotely-sensed evapotranspiration algorithms (SAFER and METRIC) in a subtropical area located in Southeast Brazil.

MATERIAL AND METHODS

Watersheds located at 24°48'S, 49°13'E, in the municipality of Águas de Santa Bárbara, central-western part of São Paulo State, Brazil were studied. The agrometeorological station within this area have a reference surface where albedo is 0.23 and the LAI 2.88. The land use of these watersheds of this research (based on DOY 75/2017), which is presented in Fig. 2, are variated: nature vegetation (Cerrado biome) (67 km²), silviculture (Eucalyptus) (22 km²), sugarcane crops (25 km²), urban area (2 km²), regenerating fields (5 km²), roads (0.4 km²) and pasture (40 km²). The northern region of the study area is largely occupied by silviculture. The western region is occupied by agriculture (sugarcane). In the southern region there is occurrence of urban area and the pasture and forest areas occur in the central and eastern region of the study area (SILVA, MANZIONE and ALBUQUERQUE FILHO et al., 2018).

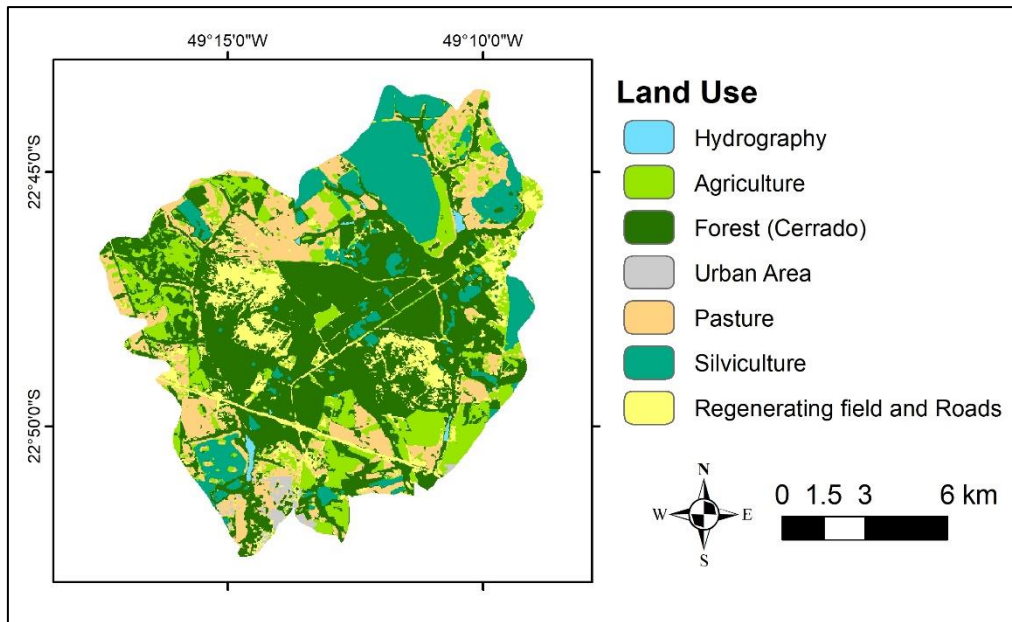


Figure 1. Basic land use of the study area (Source: SILVA et al., 2018)

The METRIC model (Mapping Evapotranspiration at high Resolution with Internalized Calibration) is a satellite-based image-processing model for calculating evapotranspiration (ET) as a residual of the surface energy balance. METRIC was developed by the University of Idaho (ALLEN, TASUMI, TRESSA et al., 2005a, 2007a,b, TASUMI et al., 2005a,b) for application to Landsat satellite imagery to maximize ET product resolution (30 m). METRIC estimates ET_A as the residual of the surface energy balance (ALLEN et al., 2007b) according to Eq. 1

$$\lambda E = R_n - G - H \quad (1)$$

where λE is the latent heat flux, R_n is the net radiation, H is the sensible heat flux, and G is the soil heat flux. The ET_A is calculated by dividing the latent heat flux by the latent heat of vaporization of water. Details for the estimation of each component of the surface energy balance and internal calibration of biases can be found in Allen et al. (2007b, 2011).

At the time of satellite-overpass, high ET (“cold pixel” or ET_{cold}) and negligible ET (“hot pixel” or ET_{hot}) pixels were selected for internal calibration (ALLEN et al., 2007b). This procedure is based on information provided in the satellite images, and should not be equated to the calibration of crop models using observed field data. Details for the estimation of each component of the surface energy balance and internal calibration of biases can be found in Allen et al. (2007b, 2011).

We used short-grass standardized Penman–Monteith reference crop evapotranspiration (ET_0) (ASCE-EWRI, 2005), adopting the approach by Chávez et al. (2008, 2012), a crop coefficient K , and the METRIC “cold pixel” (ET_{cold}) to determine ET_0F , the ratio of ET_{cold} to a calculated crop ET based on weather data, based on Eq. 2.

$$ET_0F = ET_{cold} \frac{K}{ET_0} \quad (2)$$

Although K values are suggested in the METRIC literature. A K value of 0.85 was obtained, which is adequate for dryland conditions (CONRAD et al., 2007; LIAQAT and CHOI, 2015). This is a one-time calibration used for all sites and years, and the resulting K value can be used for future studies in the region. Values of ET_0F for satellite pass days were calculated for all pixels in the image by scaling ET_0F of the cold pixel by ET/ET_{cold} based on values for satellite pass days, daily ET_0F values for all pixels were determined using cubic spline interpolation and daily ET_0 determined from weather data, thus allowing the calculation of daily ET_A of each cell for the day multiplied by daily ET_0). METRIC was performed using the R package “water”.

$$ET_A = ET_0F ET_0 \quad (3)$$

In the other hand, the “Simple Algorithm for Evapotranspiration Retrieving” (SAFER) algorithm was used for modeling the instantaneous values of the ratio of actual (ET_A) to the reference (ET_0) evapotranspiration, which was then multiplied by ET_0 from the agrometeorological stations for estimating the daily ET large-scale values, based on Eq. 4.

$$\frac{ET_A}{ET_0} = \exp \left[a + b \left(\frac{T_s}{\alpha_0 \cdot NDVI} \right) \right] \quad (4)$$

where α_0 is the surface albedo (dimensionless), NDVI is the Normalized Difference Vegetation Index (dimensionless), T_s is the surface temperature ($^{\circ}C$), and a and b are respectively 1.8 and -0.0008 (TEIXEIRA et al., 2014; SILVA et al., 2019).

Surface temperature was modeled from the residue of the Stefan-Boltzmann equation without the use of thermal bands (SILVA et al., 2019). The complete formulation of SAFER and its practical application with the R package “agriwater” is described by Silva et al. (2019). An essential difference between the two models is that METRIC bases evapotranspiration

modeling on the energy balance equation (Eq. 1) while SAFER is based on three satellite image dependent parameters: NDVI, surface albedo and temperature of surface (Eq. 4). A Landsat-8 image from 26th November 2016 was used to apply both methods in the study area, using $ET_0 = 4.3$ mm.

RESULTS AND DISCUSSION

The comparison of the surface temperature and actual evapotranspiration retrieved from METRIC and SAFER is shown in Fig. 2.

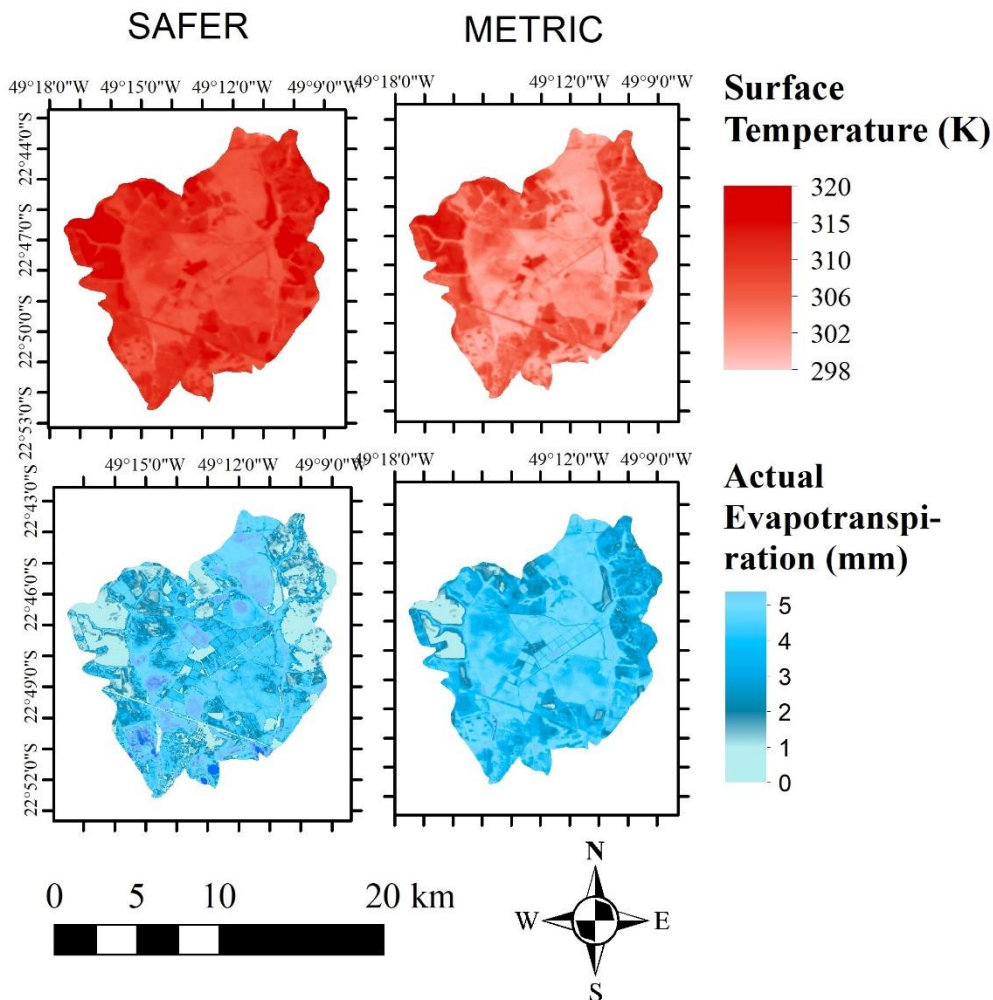


Figure 2. Spatial distribution of the daily values for surface temperature and actual evapotranspiration from the mixed agroecosystems in Águas de Santa Bárbara in 26th November 2016 with a Landsat-8 digital image.

Silviculture and forest presented surface temperatures around 2 K smaller than pasture and sugarcane in METRIC and 7 K in SAFER. SAFER is more sensitive to surface

temperature than METRIC, so ET_A values using SAFER were higher. Silva et al. (2019) have already suggested that surface temperature modeling without thermal bands needs to be better evaluated in future work.

Table 1. Average values of land surface temperature and actual evapotranspiration for the main land uses of the study area in Águas de Santa Bárbara in 26th November 2016 with a Landsat-8 digital image.

Land surface temperature	Sugarcane	Pasture	Silviculture	Forest
	(K)			
SAFER	315 ± 0.7	310 ± 0.6	299 ± 0.7	299 ± 0.9
METRIC	309 ± 0.7	308 ± 0.5	304 ± 0.8	306 ± 0.4
Actual evapotranspiration	Sugarcane	Pasture	Silviculture	Forest
	(mm)			
SAFER	1.8 ± 0.9	1.2 ± 0.3	3.0 ± 0.8	3.6 ± 0.7
METRIC	2.3 ± 0.8	1.5 ± 0.2	3.9 ± 0.7	3.8 ± 0.9

The results showed similarity of ET_A estimate from models, although high deviation especially at high ET_A values was observed. This is due to differences as the need of anchor pixel in METRIC and the assumptions of SAFER in extrapolating air temperature to land surface temperature on a daily basis. However, minimum ground data requirement is the major advantage of the METRIC over the SAFER model. Although, SAFER requires high quality weather data from the ground station located inside the study area, it takes into account daily variability of climatic parameter. Samples of 68 pixels from each main land uses were used to generate the scatterplot of Fig. 3, where some darker points occur because of overlapping points. Forest (Cerrado) and silviculture showed similar ET_A values while pasture reached the lowest values.

The main difficulty for the use of METRIC is the requirement of extreme thermohydrological conditions, so-called "hot pixel" and "cold pixel", being necessary to approximate these conditions for exposed soil and river areas, respectively. Silva, Silva, Santos (2019) and Foolad et al. (2019) developed automation of hot pixel and cold pixel selection for the SEBAL and METRIC models, respectively.

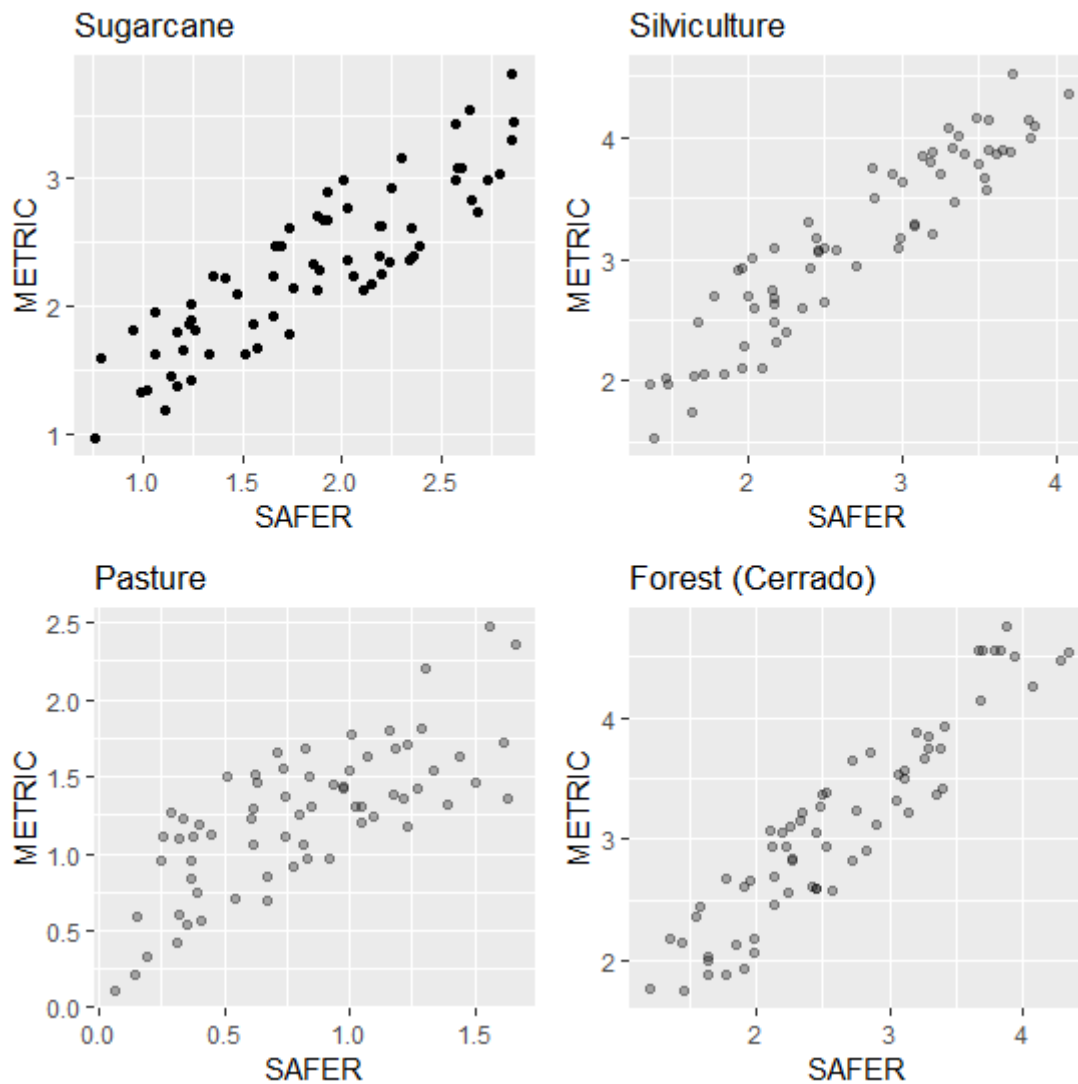


Figure 3. Scatterplot comparing actual evapotranspiration values from samples of 68 pixels from each main land use of the study area.

CONCLUSIONS

The study has considered both models feasible for estimation of ET_A from satellite data in the study area. In this study, the maximum value, the sum and ET_A range by METRIC was higher than SAFER because the surface temperature retrieved by SAFER was always higher than that of METRIC, generating lower ET_A values. In future studies, more days of the year with different climatic conditions need to be evaluated to compare the behavior of the models throughout the hydrological year.

ACKNOWLEDGMENTS

The authors are grateful to CNPq (National Council for Scientific and Technological Development of Brazil) for the financial support and for the fellowship for the first author. To FAPESP (São Paulo State Research Foundation) for the financial support for groundwater monitoring network implementation and maintenance (Processes 2014/04524-7 and 2016/09737-4). The authors are also grateful to Institute of Technological Research (IPT) for the support by the "Novos Talentos" program, which enabled the first author to participate in INOVAGRI Meeting.

REFERENCES

- ALLEN, R. Quality assessment of weather data and micrometeorological flux-impacts on evapotranspiration calculation. **Journal of Agricultural Meteorology**, v. 64, n. 4, p. 191–204, 2008.
- ALLEN, R., A. IRMAK, R. TRESSA, J.M.H. HENDRICKX, W. BASTIAANSEN, J. KJAERGAARD. Satellite-based ET estimation in agriculture using SEBAL and METRIC. **Hydrological Processes**, v. 25, n. 26, p. 4011–4027, 2011.
- ALLEN, R.G., M. TASUMI, R. TRESSA. Satellite-based energy balance for mapping evapotranspiration with internalized calibration (METRIC)—Applications. **Journal of Irrigation and Drainage Engineering**, v. 133, n. 4, p. 395–406, 2007a.
- ALLEN, R.G., M. TASUMI, R. TREZZA. Satellite-based energy balance for mapping evapotranspiration with internalized calibration (METRIC)—Model. **Journal of Irrigation and Drainage Engineering**, v. 133, n. 4, p. 380–394, 2007b.
- ASCE-EWRI. **The ASCE standardized referent crop evapotranspiration equation**. Reston: Technical Committee Report on Environmental and Water Resource Institute of the American Society of Civil Engineers from the Task Committee on Standardization of Reference Evapotranspiration, 2005. 70 p.
- CHÁVEZ, J.L., C.M. NEALE, J.H. PRUEGER, W.P. KUSTAS. Daily evapotranspiration estimates from extrapolating instantaneous airborne remote sensing ET values. **Irrigation Science**, v. 27, n. 1, p. 67–81, 2008.

CHÁVEZ, J.L., GOWDA, P.H., HOWELL, T.A., GARCIA, L.A., COPELAND, K.S., NEALE, C.M.U.. ET mapping with high-resolution airborne remote sensing data in an advective semiarid environment. **Journal of Irrigation and Drainage Engineering**, v. 138, n. 5, p. 416–423, 2012.

CONRAD, C., S.W. DECH, M. HAFEEZ, J. LAMERS, C. MARTIUS, G. STRUNZ. Mapping and assessing water use in a Central Asian irrigation system by utilizing MODIS remote sensing products. **Irrigation and Drainage Systems**, v. 21, n. 3-4, p. 197–218, 2007.

FOOLAD, F.; BLANKENAU, P.; KILIC, A.; ALLEN, R.G.; HUNTINGTON, J.L.; ERICKSON, T.A.; OZTURK, D.; MORTON, C.G.; ORTEGA, S.; RATCLIFFE, I.; FRANZ, T.E.; THAU, D.; MOORE, R.; GORELICK, N.; KAMBLE, B.; REVELLE, P.; TREZZA, R.; ZHAO, W.; ROBISON, C.W. Comparison of the Automatically Calibrated Google Evapotranspiration Application—EEFlux and the Manually Calibrated METRIC Application. **Preprints**, v.1, n.40, p. 2018070040, 2018.

HARGREAVES, G.H.; ALLEN, R.G. History and evaluation of Hargreaves evapotranspiration equation. **Journal of Irrigation and Drainage Engineering**, v.129, n.1, p.53-63, 2003.

LIAQAT, U.W., M. CHOI. Surface energy fluxes in the Northeast Asia ecosystem: SEBS and METRIC models using Landsat satellite images. **Agricultural Forest Meteorology**, v. 214–215, p. 60–79, 2015.

SILVA, A. M.; SILVA, R. M.; SANTOS, C. A. G. Automated surface energy balance algorithm for land (ASEBAL) based on automating endmember pixel selection for evapotranspiration calculation in MODIS orbital images. **International Journal of Applied Earth Observation and Geoinformation**, v. 79, n. 7, 1-11, 2019.

SILVA, C. O. F.; MANZIONE, R. L.; TEIXEIRA, A. H. C. Large-Scale Spatial Modeling of Crop Coefficient and Biomass Production in Agroecosystems in Southeast Brazil. **Horticulturae**, v. 4, n. 4, 44, 2018.

SILVA, C. O. F.; TEIXEIRA, A. H. C.; MANZIONE, R. L. agriwater: An R package for spatial modelling of energy balance and actual evapotranspiration using satellite images and agrometeorological data. **Environmental Modelling & Software**, v. 120, 104497, 2019.

TEIXEIRA, A. H. de C.; HERNANDEZ, F. B. T.; ANDRADE, R. G.; LEIVAS, J. F.; BOLFE, E. L. Energy balance with Landsat images in irrigated central pivots with corn crop in the São Paulo State, Brazil. **Proceedings of SPIE - International Society for Optical Engineering**, v. 9239, p. 923900-1-923900-10, 2014.